

**Installation advise notes, for Thornhill Range Cookers,**  
**Pellaxx Burner 3 Oven Pellet ECO Range Cooker**



The following are notes for you the customer and the installer to ensure everything is ready for the delivery and installation of your new cooker.

There are 5 areas to check prior to delivery:

- 1: Floor
- 2: Flue/Chimney.
- 3: Electrical works
- 4: Fuel, oil plumbing.
- 5 Cupboards and work tops

## **Floors:**

The floor should be at the same level or higher than the rest of the floor.

If the floor is to be tiled, this should be done first, not after the cooker is in place as it is then lower than the floor and impossible to get out/move without damaging tiles.

If the floor is to be wood or other flammable material then the area under the cooker should be tiled or a slab of stone laid, so that it ends up slightly higher than the surrounding floor.

Minimum area under the cooker from the wall is 1,000mm wide by

## **Flue/Chimney:**

Any chimney should be lined with a suitable 5"/125mm Multifuel liner, terminating at a register place. The liner should then have a 'Register plate adaptor' at the bottom ready to take the virtuous enamel flue pipe.

We recommend Flue Supplies, see [www.fluesupplies.com](http://www.fluesupplies.com) 5" Register plate adaptor.



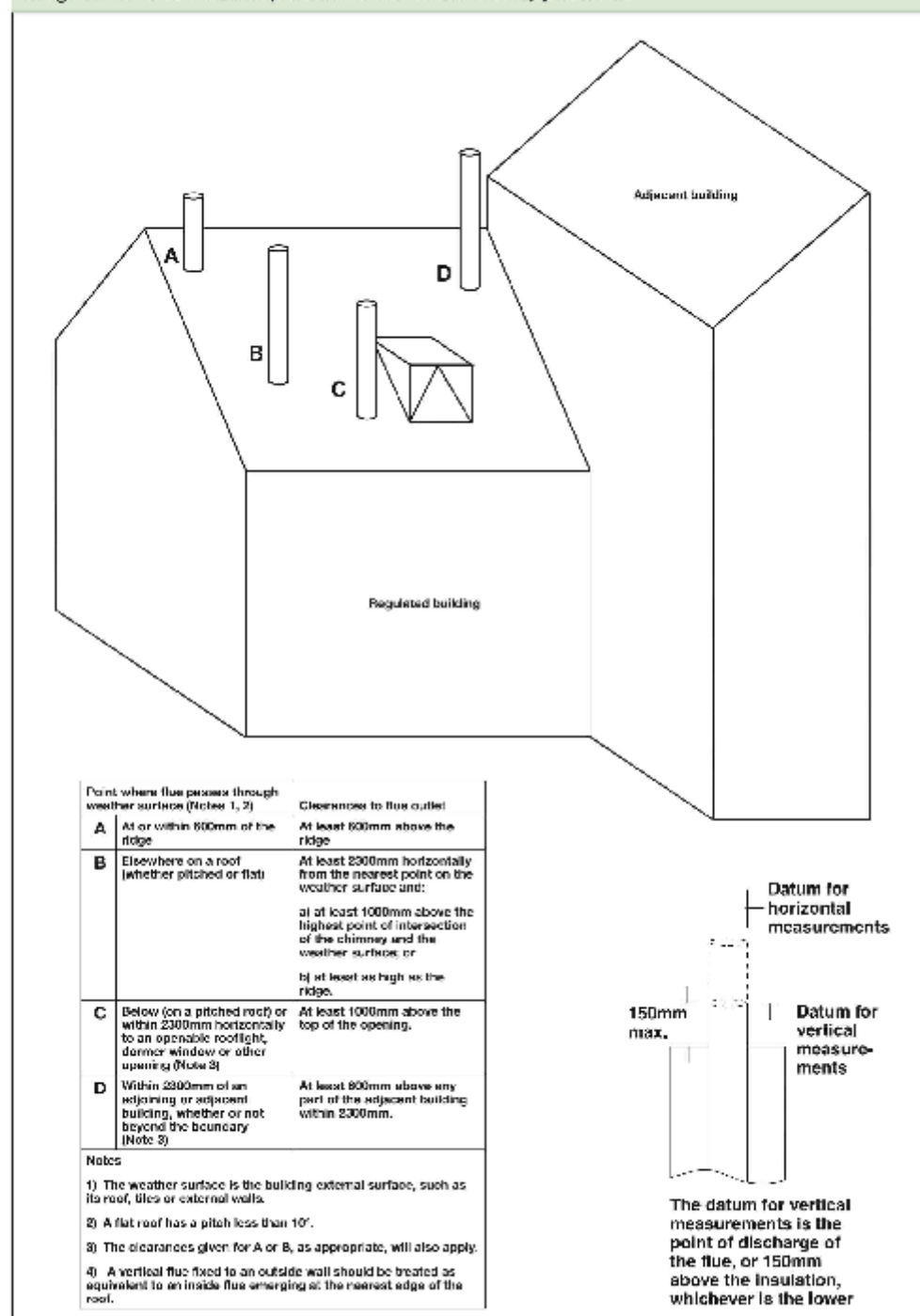
The top of the chimney should have a Bird guard/rain cap terminal.

We recommend Vedette cowls or similar, not the spinning ones which can cause excessive draw. Too much draw and erratic draw on a chimney is a problem for pellet burners.

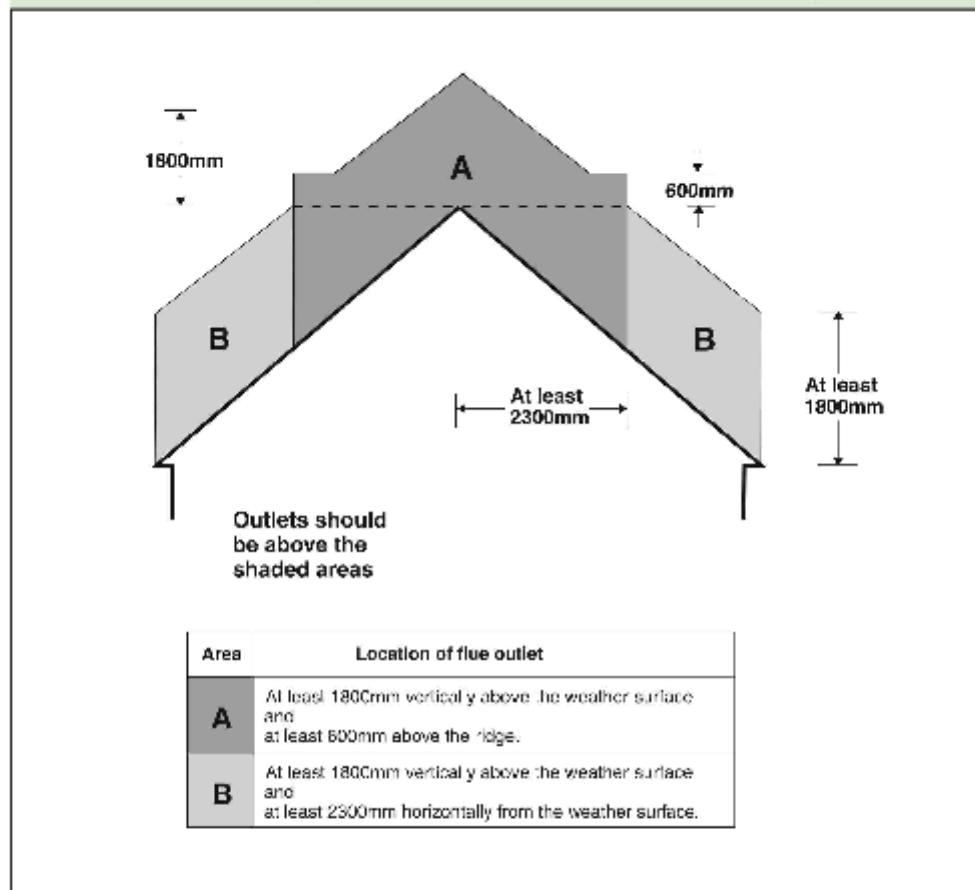
If there is no chimney, twin wall 5 inch/125mm flue sections can be used to build one, internally or externally. Maximum flue gas temperature is 300C. 5" multifuel twin wall is best. We use ;- <http://www.fluesupplies.com/twin-wall-insulated/5-inch-system.html>

Again a 'storm' cowl or similar is recommended to reduce draw.

Diagram 17 Flue outlet positions for solid fuel appliances



**Diagram 18 Flue outlet positions for solid fuel appliances – clearances to easily ignited roof coverings**  
(Note: This diagram needs to be read in conjunction with Diagram 17)



**2.12** A way of meeting the requirements where flues discharge on or in close proximity to roofs with surfaces which are readily ignitable, such as where roofs are covered in thatch or shingles, would be to increase the clearances to flue outlets to those shown in Diagram 18.

**Note:** Thatched roofs can sometimes be vulnerable to spontaneous combustion caused by heat transferred from flues building up in thick layers of thatch in contact with the chimney. To reduce the risk it is recommended that rigid twin-walled insulated metal flue liners be used within a ventilated (top and bottom) masonry chimney void provided they are adequately supported and not in direct contact with the masonry. Non-metallic chimneys and cast in-situ flue liners can also be used provided the heat transfer to the thatch is assessed in relation to the depth of thatch and risk of spontaneous combustion.

Spark arrestors are not generally recommended as they can be difficult to maintain and may increase the risk of flue blockage and flue fires.

Further information and recommendations are contained in Hetas Information Paper 1/007 *Chimneys in Thatched Properties*.

## Connecting fluepipes

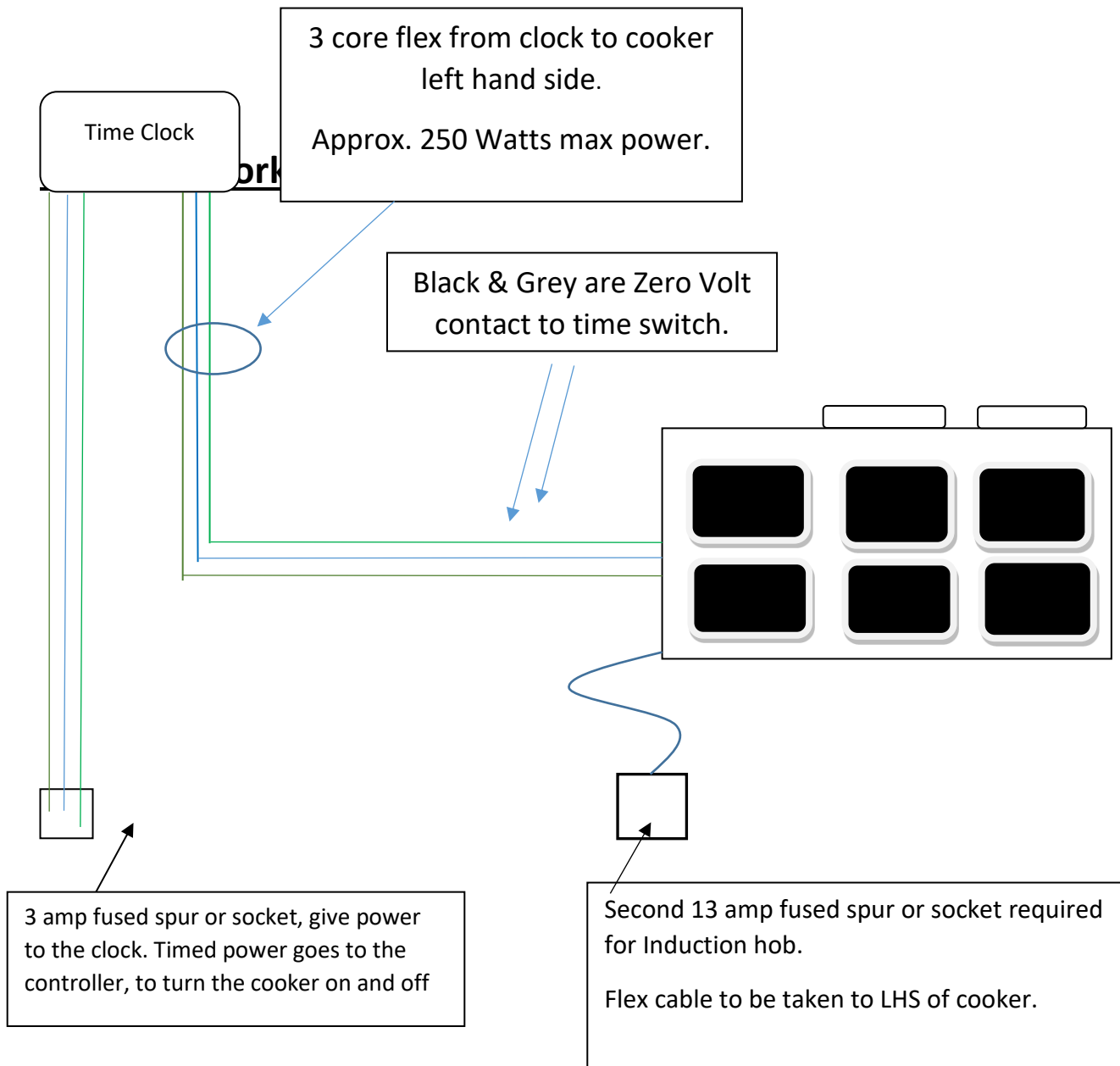
**2.13** For connecting fluepipes a way of meeting the requirements would be to follow the general guidance in Paragraphs 1.32 and 1.33.

## Location and shielding of connecting fluepipes

**2.14** Connecting fluepipes should be used only to connect appliances to their chimneys. They should not pass through any roof space, partition, internal wall or floor, except to pass directly into

## ECO Range Pellet fired cooker

### Electrical installation diagram for cooker with Pellasx Burner



The fused spur/clock supplied should be wired in place and about 1.5 meters of minimum .75 - **3 core** flex should be left to the left hand side of the cooker ready to connect inside the cooker.

The clock should be in a convenient position so that:

The clock can be reached easily to set.

You do not have to put your arm over a hot cooker to turn it off.

We suggest: <https://www.screwfix.com/p/greenbrook-t205-scr-kingshield-7-day-fused-digital-timer-spur-switch-230v/7643g> or similar.

You can also buy smart phone clock/switches if you prefer. See <https://www.tlc-direct.co.uk/Products/SMFSTWIFI.html>

## **Cupboards and work tops:**

Cupboards can in theory go right up to and butt against the side of the cooker. It is best though to leave a 30-40mm gap to allow air circulation, keeping the both the cupboards and the cooker side cooler.

An infill piece can be added to close the gap in the front.

The work top can then be added leaving a small 3-5mm gap to allow for expansion of the cooker when hot.

**Sometime kitchen fitter fit an 'end panel' on the side of the last cupboards to look neat. This is OK provided the area where the kick space is should be cut away to allow air circulation.**

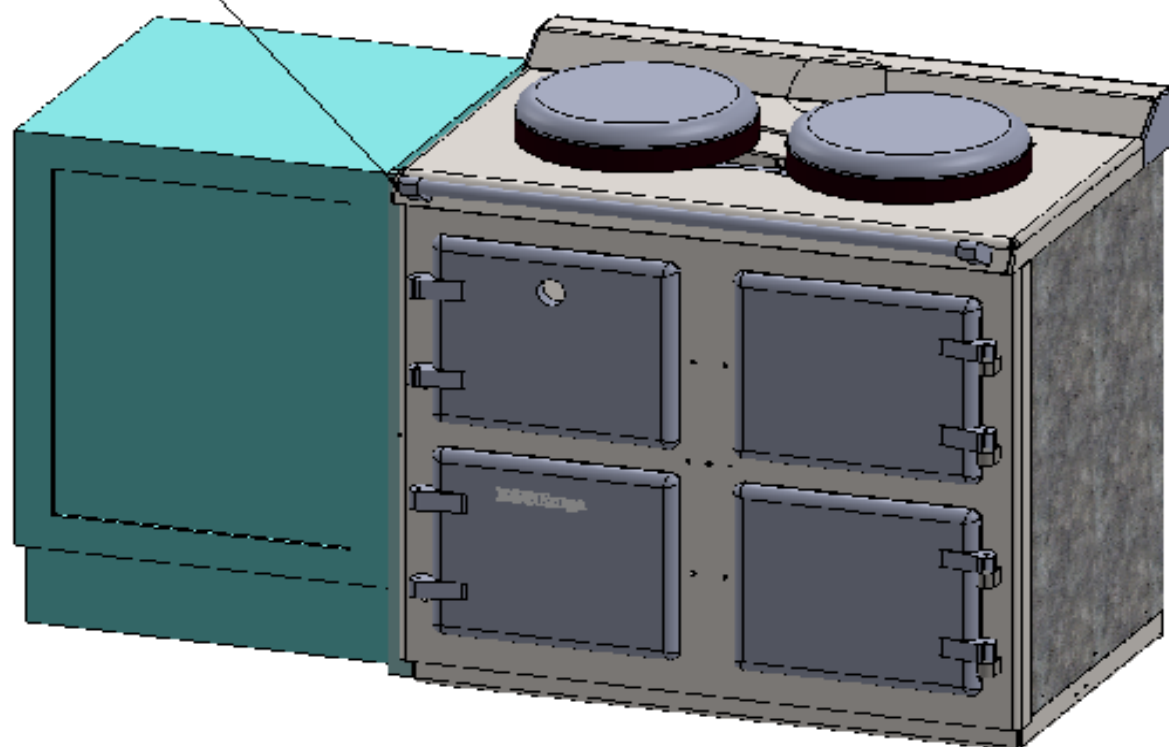
Please see the following diagrams.

The same applies to both the left and the right-hand sides.

30-40mm

UNLESS OTHERWISE SPECIFIED: DIMENSIONS ARE IN MILLIMETERS SURFACE FINISH: TOLERANCES: LINEAR: ANGULAR:				FINISH:		DEBUR AND BREAK SHARP EDGES		DO NOT SCALE DRAWING		REVISION	
		NAME		SIGNATURE		DATE		21/08/2016		<div style="text-align: center; font-size: 2em;"> Cooker -cupboard showing air gap </div>	
DRAWN		G.Thornhill									
CHK'D											
APP'VD											
MFG											
Q.A						MATERIAL:		TITLE:		A4	
						WEIGHT:		SCALE:1:50		SHEET 1 OF 1	

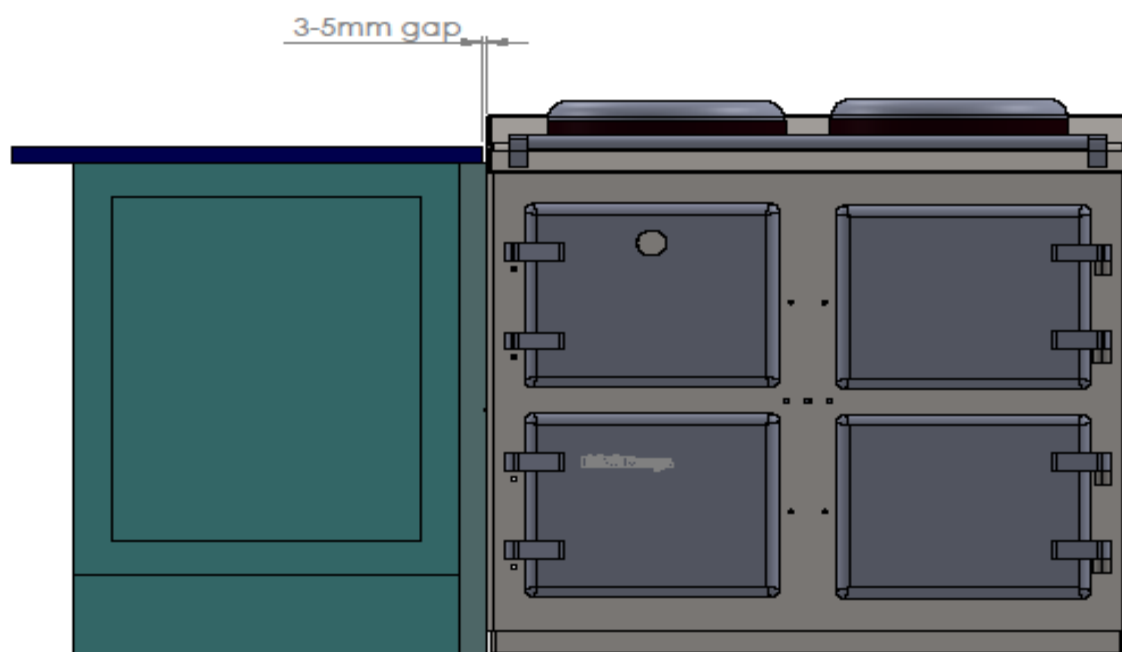
Infill strip can be added to side of the cupboard to close gap.  
This allows air to circulate.



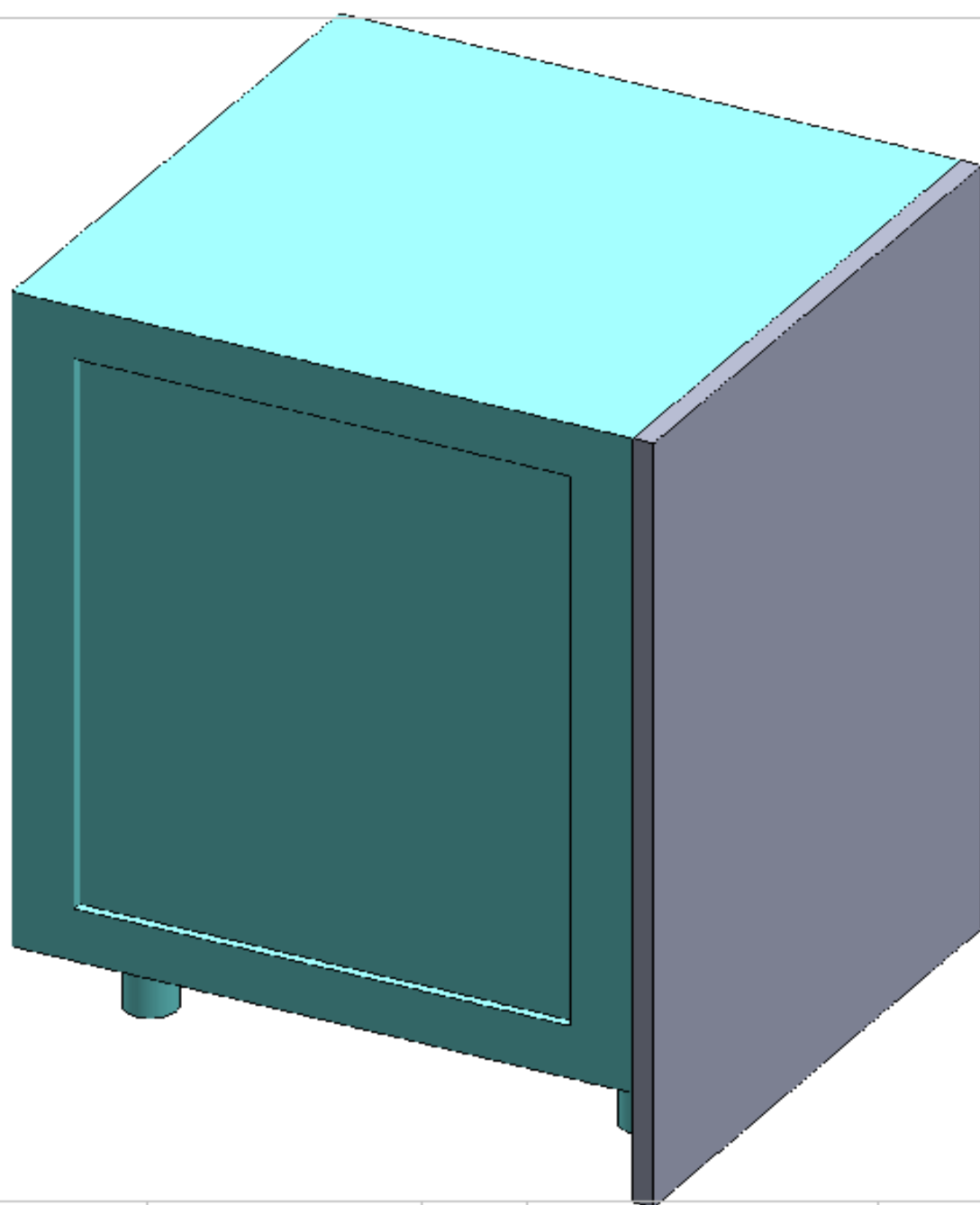
UNLESS OTHERWISE SPECIFIED: DIMENSIONS ARE IN MILLIMETERS SURFACE FINISH: TOLERANCES: LINEAR: ANGULAR:				FINISH:		DEBUR AND BREAK SHARP EDGES		DO NOT SCALE DRAWING		REVISION	
				15/08/2016				<b>Cupboard Instalation showing infill strip.</b>			
DRAWN: G.Thornhill											
CHK'D:											
APP'D:											
MFG:											
Q.A.						MATERIAL:		DWG NO.			
						WEIGHT:		SCALE:1:50			
								SHEET 1 OF 1			

A4

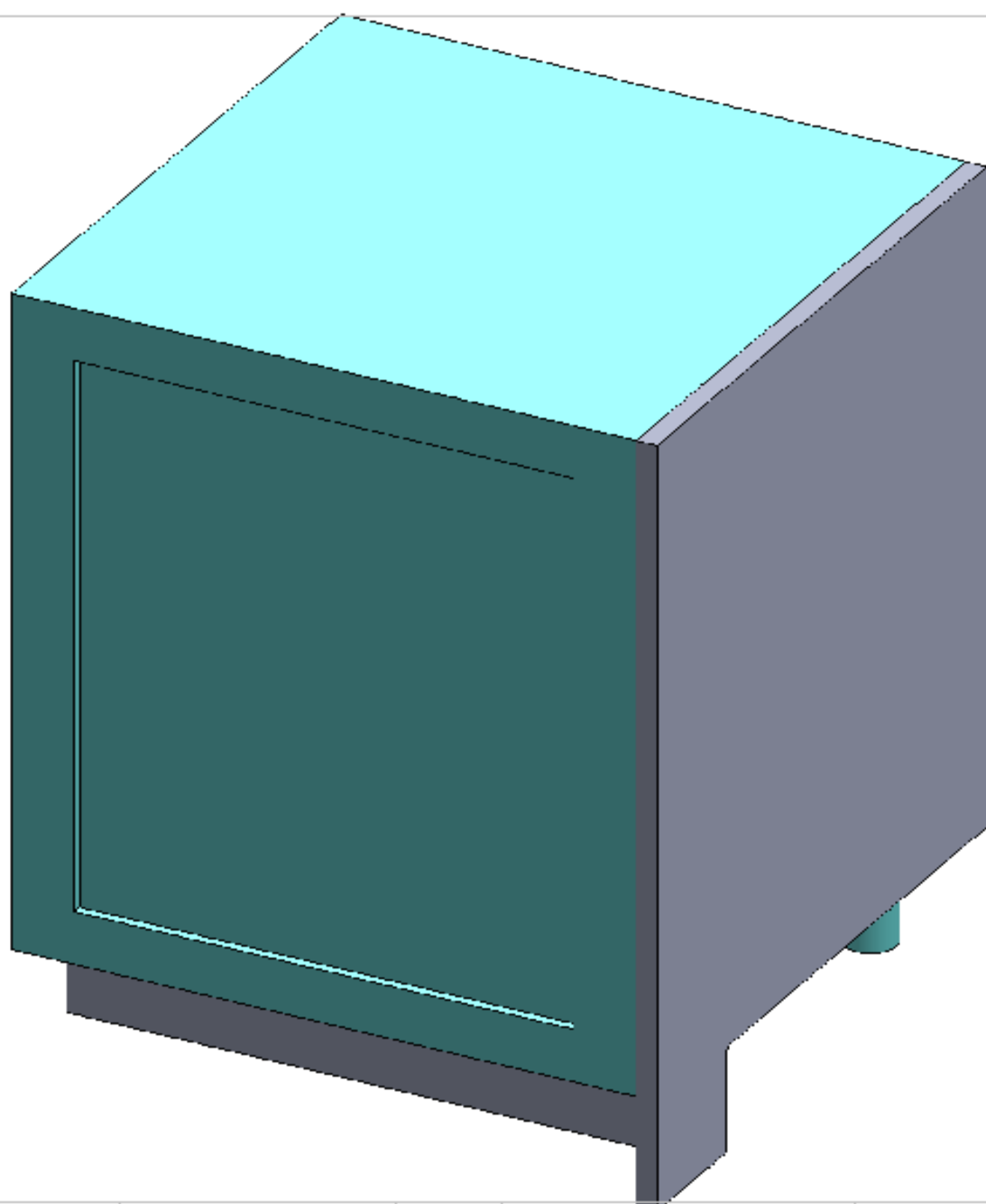
Leave a 3-5mm gap between the work surface and the cooker top to allow for expansion as the top get hotter.



UNLESS OTHERWISE SPECIFIED: DIMENSIONS ARE IN MILLIMETERS SURFACE FINISH: TOLERANCES: LINEAR: ANGULAR:				FINISH:		DEBUR AND BREAK SHARP EDGES		DO NOT SCALE DRAWING		REVISION	
								TITLE:  <div style="text-align: center; font-size: 1.2em;">Installation of work top next to cooker</div>			
NAME		SIGNATURE		DATE		18/17/2016					
DRAWN		G.Thornhill									
CHK'D											
APP'D											
MFG											
Q.A						MATERIAL:		DWG NO.			
								A4			
						WEIGHT:		SCALE:1:50			
								SHEET 1 OF 1			



UNLESS OTHERWISE SPECIFIED: DIMENSIONS ARE IN MILLIMETERS SURFACE FINISH: TOLERANCES: LINEAR: ANGULAR:				FINISH:		DEBUR AND BREAK SHARP EDGES		DO NOT SCALE DRAWING		REVISION	
						SCALE 1 : 5					
NAME		SIGNATURE		DATE		22/07/2016		TITLE:			
DRAWN		G.Thornhill						End cupboards showing side panel. This is blocking air flow.			
CHKD											
APPVD											
MFG											
Q.A.											
				MATERIAL:				DWG NO.			
								A4			
				WEIGHT:				SCALE:1:20			
								SHEET 1 OF 1			



UNLESS OTHERWISE SPECIFIED: DIMENSIONS ARE IN MILLIMETERS SURFACE FINISH: TOLERANCES: LINEAR: ANGULAR:				FINISH:		DEBUR AND BREAK SHARP EDGES		DO NOT SCALE DRAWING		REVISION	
								SCALE 1 : 5			
NAME		SIGNATURE		DATE		22/05/2016		TITLE:			
DRAWN		G.Thomhill						End cupboards showing side pannel cut away, to allow air flow			
CHKD											
APP'D											
MFG											
Q.A											
				MATERIAL:				DWG NO.			
				WEIGHT:				SCALE:1:30			
								SHEET 1 OF 1			

A4



A neat installation that shows the front fill piece has been blended in and the work top fitted with about 3mm gap.

**The Cooker is pre-tested and come in one piece.**

**Please inform us if the are more than 3 steps and any tight bends. The door width must be over 28", 72cm**

**The cooker weighs 600kg.**